

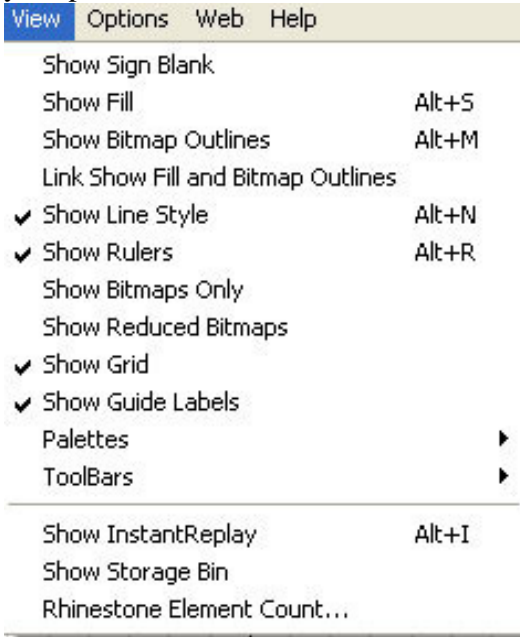


OOBling Pro Tutorial
Setting Up Your Workspace
Copyright 2011

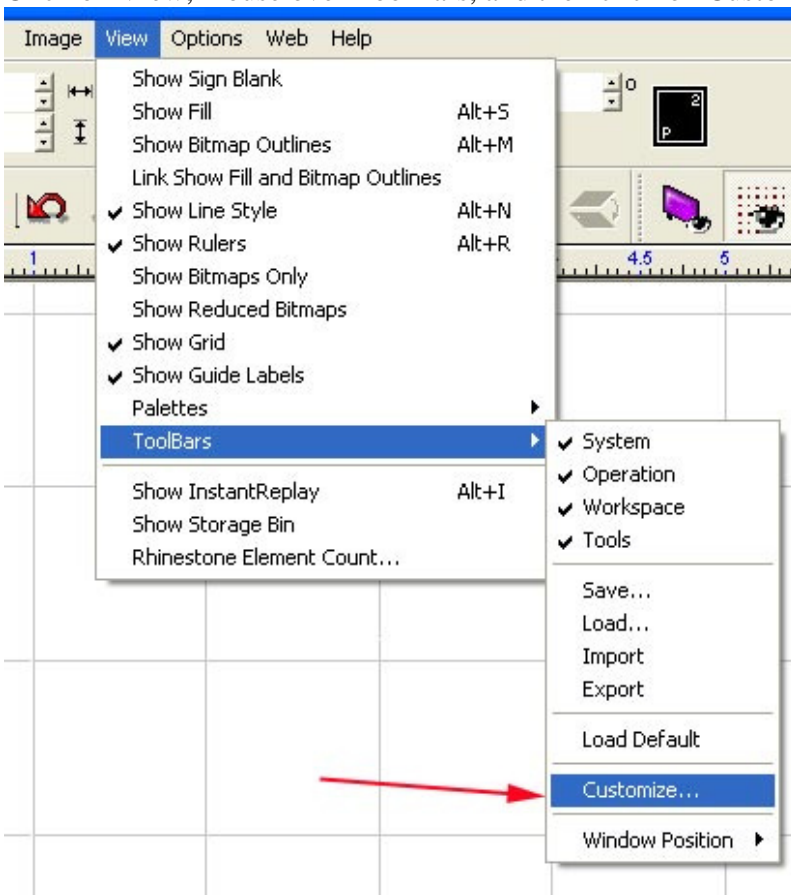
Visit us at <http://www.synergy17.com>

In this tutorial we will show you how to customize your OOBling Pro workspace.

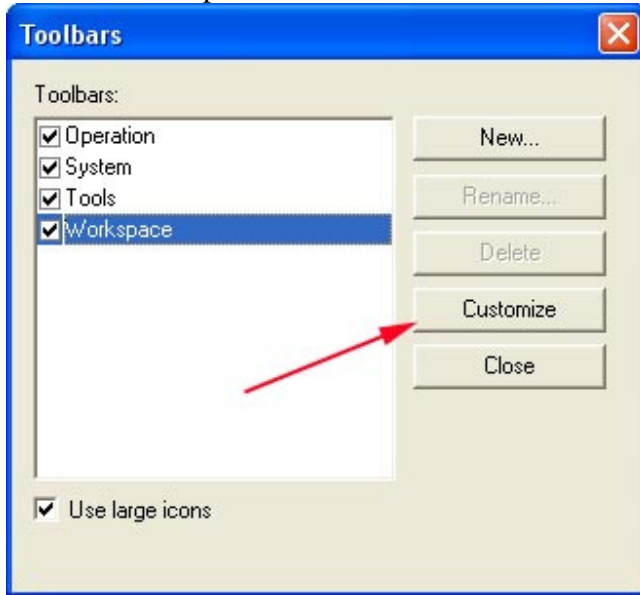
- 1) When you first install OOBling Pro, it is set to automatically show the Sign Blank, Line Style, Rulers, Grid, and Guide Labels. You can access these settings in the View menu and either leave them on or turn them off to your preference.



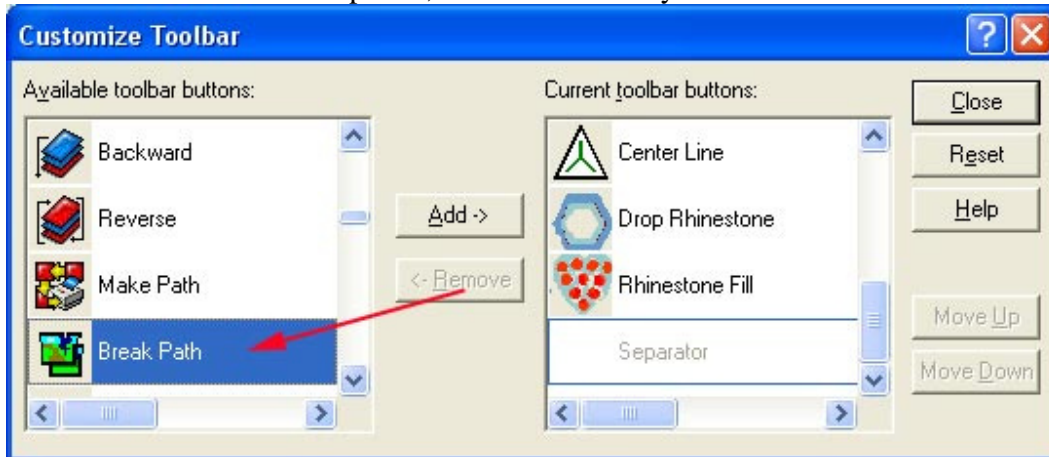
- 2) Next you will want to add quick launch icons for Break Path, Replace With Rhinestones, and the Rhinestone Element Count buttons to your Workspace toolbar to make designing easier.
- 3) Click on View, mouse over ToolBars, and then click on Customize...



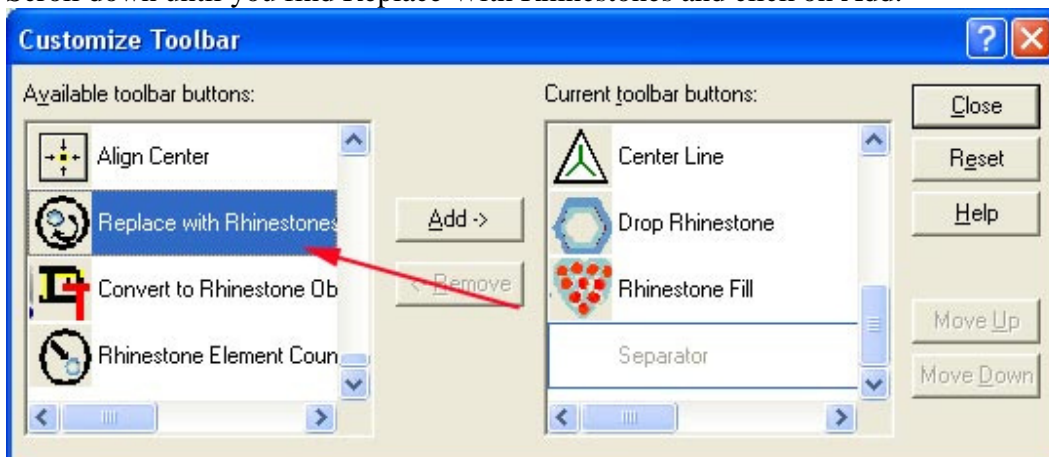
4) Click on Workspace and then click on Customize.



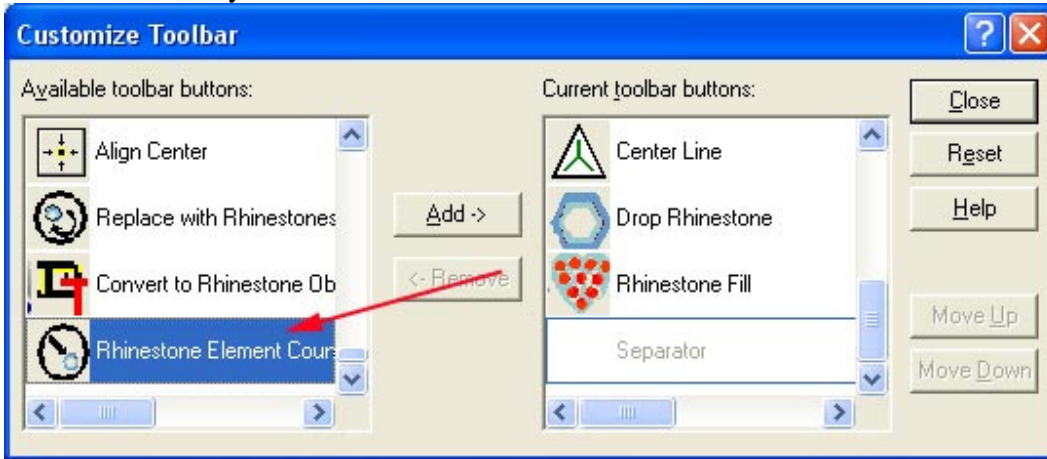
5) Under Available Toolbar Options, scroll down until you find Break Path and click on Add.



6) Scroll down until you find Replace With Rhinestones and click on Add.



7) Scroll down until you find Rhinestone Element Count and click on Add.



8) Click on Close and then click on Close to get out of the Toolbars window.

9) You should now see the three new icons on your toolbar and your workspace is ready!